

## Guided Rework - Rework on the highest level

### Technical highlights:

- 1,800 W high-performance hybrid heating element
- Full size 2,400 W IR bottom heater
- High-definition cameras for placement and reflow process observation
- Computer aided component adjustment, digital "split optic"
- Ergonomically optimized system operation
- Modern, operator friendly control software



## Ersa HR 550 hybrid rework system – high-performance rework for professionals!

The HR 550 hybrid rework system addresses all users with highest requirements in terms of precision and process safety in electronic assembly rework applications.

The HR 550 provides a 1,800 W high-performance hybrid heating element to desolder and solder SMT components up to dimensions of 70 x 70 mm! A 2,400 W infrared bottom heater with three heating zones guarantees homogeneous bottom-side preheating of the complete assembly. Non-contact and contacting temperature sensing directly at the component as well as an optimized process control guarantee ideal removal and installation processes of various component types.

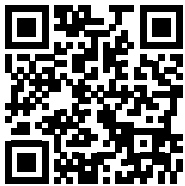
A high-precision vacuum pipette, integrated into the units heating head, operates component removal and placement. Stepper motors for the exchangeable hybrid heating head and the vacuum pipette supply exact movement during component desoldering and installation. An integrated force sensor recognizes when

component and printed circuit board are contacted. Ergonomically arranged control elements and computer-aided component alignment by means of high-contrast, high-definition camera images are special highlights for the operator.

The HR 550 is prepared for operation with the Ersa Dip&Print Station. The rework system is operated via a newly developed software and ergonomically arranged operating elements on the station.



Technical data:	
Dimensions (W x D x H)	573 x 765 x 545/747 mm (heating head top/bottom)
Weight	76 kg
Supply voltage	220 – 240 V AC, 50 – 60 Hz, 16 A
Top heater data	70 x 70 mm, 900 W convection + 900 W infrared
Top heater technology	Hybrid heating element with medium wave IR radiators and additional hot-air heating
Bottom heater data (W x D)	390 x 270 mm, 2,400 W in three zones
Bottom heater technology	Medium wave infrared radiator with mesh grid cover
Board size	up to 400 mm x 300 mm (+x), 15.6 x 11.8 inch
Working depth	349 mm
Working distance	30 – 60 mm to top heater, 35 mm to bottom heater
Component size	from 01005 up to 70 x 70 mm, 2.76 x 2.76 inch
Positioning laser	Class II
Field of view placement camera	70 x 70 mm (wide angle) 25 x 33 mm (tele)
Operating software	HRSOft 2 – suitable for Windows 8 and Windows 10



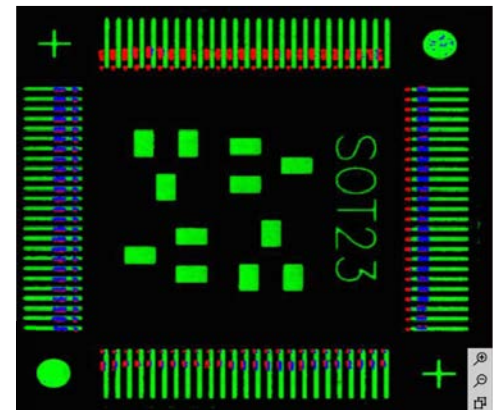
further information on our website



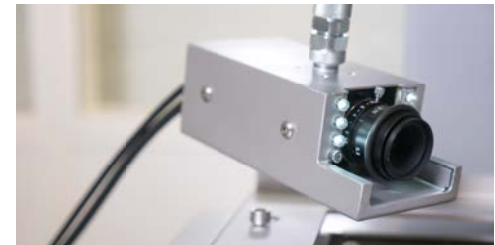
Ersa HR 550 hybrid rework system – rework at the highest level

### Order information:

Order No.	Description
OHR550	<b>Ersa HR 550</b> Hybrid Rework System
OHR550L	<b>Ersa HR 550L</b> with PCB holder L 520 x 360 mm (+x)
OHR510	<b>RPC Kamera HR 550</b>
OPR100	<b>Dip&amp;Print Station</b> complete



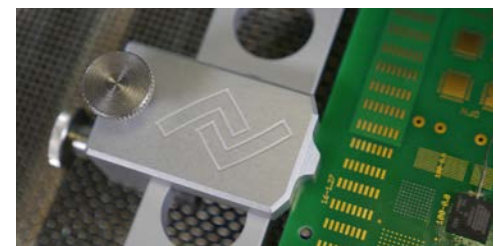
Computer aided adjustment of a QFP  
green: pads, red: component pins, blue: overlay "best match"



Optional reflow process camera



HRSOft 2 with new, intuitive operation surface



Flexible PCB holder

370 390 - 06/2020 | subject to change | © Ersa GmbH