

Guided rework - rework at the highest level for large assemblies.

Technical highlights:

- 1,800 W hybrid high-performance heating element
- Full-surface 6,400 W IR bottom heater
- High-resolution cameras for placement and process monitoring
- Computer-supported component alignment, digital »split optics«
- Ergonomically optimal system operation
- Modern, user-friendly operating software
- Motorized component rotation and X-Y adjustment
- Tip operation with resolution < 20 µm



Ersa Hybrid Rework System HR 550 XL – process large assemblies safely!

The Hybrid Rework System HR 550 XL is for all users who place the highest demands on precision and safety when reworking large assemblies.

The HR 550 XL features a 1,800 W high-performance hybrid heating element that can be used to desolder and solder SMT components up to the size of 70 x 70 mm. The 6,400 W infrared bottom heater with eight zones ensures homogeneous heating of the entire assembly.

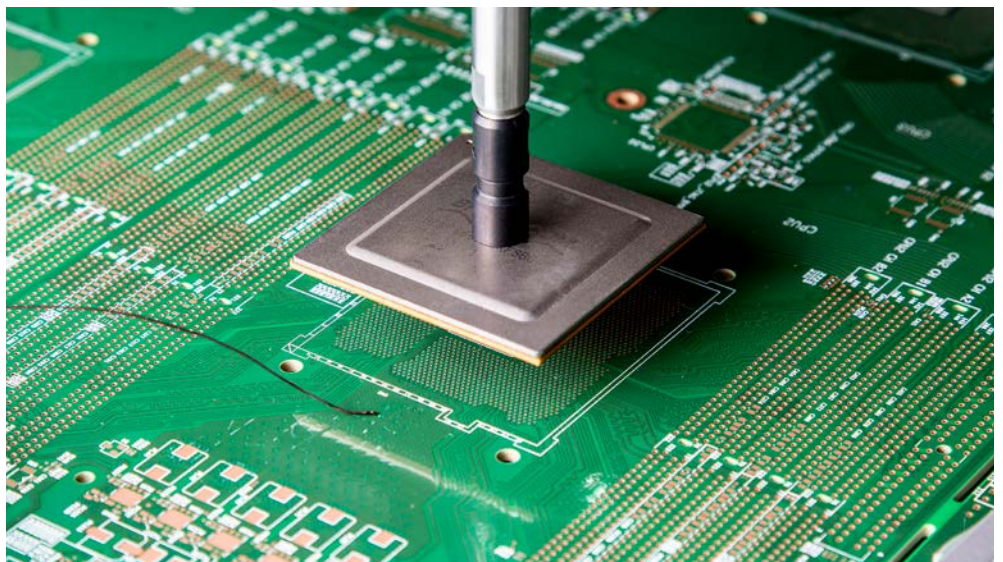
Non-contact and contacting temperature measurement on the component as well as optimized process control guarantee perfect soldering and desoldering processes. Component removal and component placement are carried out via a vacuum pipette that is integrated in the heating head.

The exchangeable heating head and the vacuum pipette are controlled by a stepper motor. An integrated force sensor detects the contact to the component and circuit board.

The motor-adjustable printed circuit board table is particularly useful for the large dimensions of the heating cassette. The component is also turned into the correct position by a motor. The HR 550 XL is prepared for use with the Ersa Dip&Print Station.

The system is managed via the HRSoft 2 operating software and ergonomically arranged operating elements on the device. The connection to the customers MES systems is prepared.

Placement of a metallic BGA.

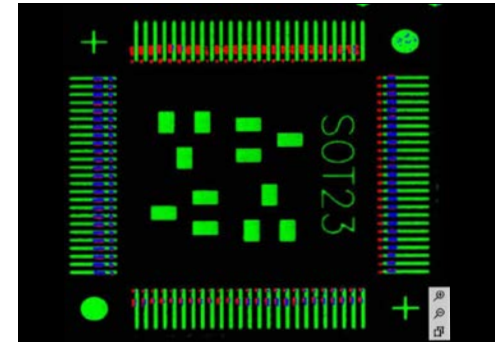


Guided rework - rework at the highest level for large assemblies.

Technical data:	
Dimensions (W x D x H):	755 x 930 x 545 / 747 mm
Weight	102 kg including control unit
Antistatic version	yes
Nominal power	8.200 W
Nonminal voltage	3 x 400 VAC, 50-60 Hz, 16 A
Top heater	Hybrid emitter 900 W infraredred + 900 W hot air, 70 x 70 mm
Bottom heater	IR emitter (8 x 800 W), 530 x 530 mm
Measurement channels	3 x K-type, 1 x IRS
Position laser	Class II
Board size	up to 530 x 610 mm (+x), 20.9 x 24 inch
Component size	01005 up to 70 x 70 mm, 2.76 x 2.76 inch
Working depths	349 mm
Working distance	30 – 60 mm to top heater, 35 mm to bottom heater
Placement camera	5 MP GigE colour camera, 70 x 70 mm (wide angle), 25 x 33 mm (telephoto)
Compressed air supply	6 – 10 bar (oil-free), ¼ inch quick coupling
Cetification mark	CE
Operating software	HRSOft 2 – suitable for Windows 8 and Windows 10
Option – Reflow process camera	2,3 MP, CMOS GigE colour camera, 25 mm focal length, illumination 2 x LED, adjustable

Order information:

Order number	description
OHR550XL	Ersa HR 550 XL Hybrid Rework System
OHR510	RPC Kamera HR 550
OPR100	Dip&Print Station complete



Computer aided adjustment of a QFP
green: pads, red: component pins, blue: overlay "best match".



further information on our website



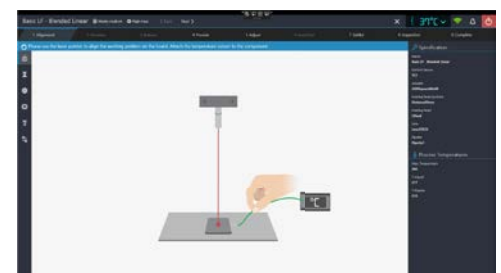
Ersa HR 550 XL Hybrid Rework System – reworking at the highest level.



Optional reflow process camera.



Motorized X-Y adjustment and component rotation.



HRSOft 2 with integrated user guidance.