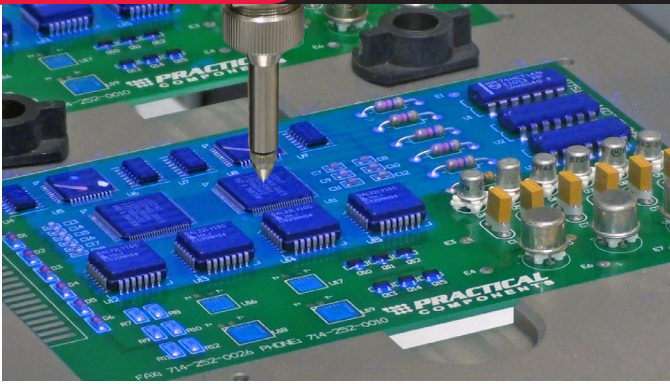




INNOVATION. **PRECISION.** EXCELLENCE.



Valve Specifications

Dimensions

195.59 mm x 22 mm x 22 mm
(7.7 in x 0.86 in x 0.86 in)

Weight

269.32 g

Viscosity Range

1 - 10,000 cps

Operating Air Pressure

60 - 100 psi

Maximum Inlet Fluid Pressure

2500 psi

Average Atomizing Air Setting

< 5 psi

Wetted Components

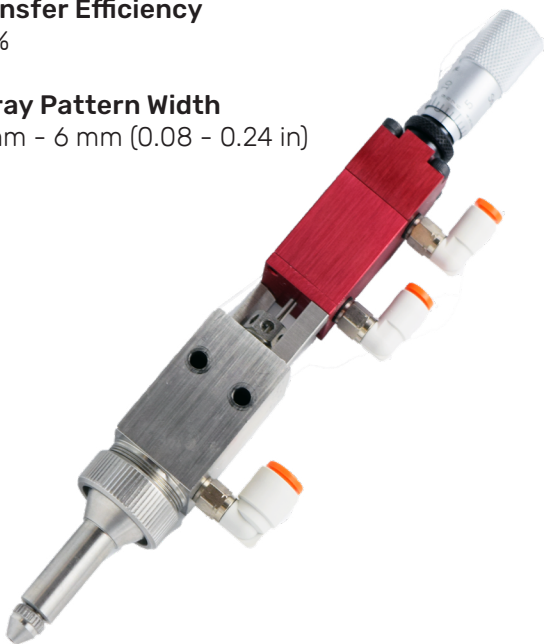
Stainless Steel, Teflon®

Transfer Efficiency

99%

Spray Pattern Width

2 mm - 6 mm (0.08 - 0.24 in)



ES Ultra Fine Ultra-Fine Extended Spray Valve

The ES Ultra Fine extended spray valve provides ultimate pattern control for narrow line spraying. With improved edge definition for spray applications requiring high precision, extremely clean and defined lines can be sprayed down to 2 mm wide while maintaining industry standard film thicknesses.

The ES Ultra Fine can achieve edge definition of ± 1 mm with a 99% transfer efficiency. This precise functionality significantly reduces overspray and allows for tight adherence to keep-out zones. It also features a micrometer flow adjustment that allows you to quickly and easily fine-tune your conformal coating process.

The ES Ultra Fine offers a variety of integrated features, including:

- 300 series stainless steel fluid body for superior material compatibility
- Small diameter extension for access close to components
- Same mounting pattern as existing ES Series valves
- Can replace traditional jet or needle dispense valves used for detailing
- Divorced valve design prevents material contamination of the air section

For more information, please contact PVA at info@pva.net or contact your local representative.

Headquarters
One Mustang Drive | Cohoes, NY 12047
tel +1 518 371 2684 | fx +1 518 371 2688
www.pva.net | info@pva.net

