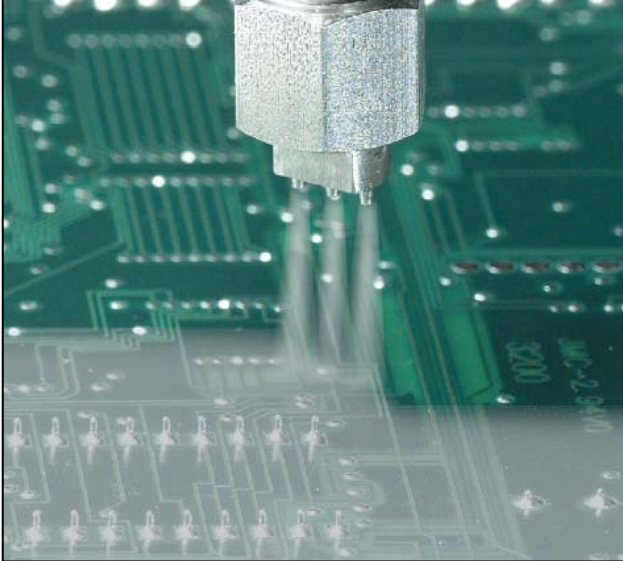




**WHERE
PRECISION
DRIVES
PRODUCTION**



VALVE SPECIFICATIONS

Dimensions:

173 mm x 19 mm
(6.82 in x 0.75 in)

Weight:

6 oz

Viscosity Range:

1 cps – 1000 cps

Operating Air Pressure:

60 – 100 psi

Maximum Inlet Fluid Pressure:

3500 psi

Wetted Components:

Stainless steel, Teflon[®], Kalrez[®]

Transfer Efficiency:

99%

Coating Speed:

Up to 457 mm (18 in) / sec

FC100-C NON-ATOMIZED FLOW COATING VALVE

The FC100-C flow coating valve produces a sharp, non-atomized stream of low viscosity fluids and coatings. The precise application process is ideal for solvent-based chemistries requiring wet film builds of at least 0.010".

The FC100-C has many integrated features including:

- ▲ Non-atomized coating process with superior edge definition
- ▲ Rapid coating speed up to 457 mm (18 in) / second
- ▲ Divorced valve design prevents material contamination of the air section
- ▲ Stainless steel fluid body for superior material compatibility
- ▲ Multi-port application head with interchangeable 19g to 27g tips
- ▲ Adjustable flow control

The FC100-C is available on all new PVA2000™, PVA650™, and PVA350™ selective coating systems, or can be retrofitted to any existing PVA platform. For more information on PVA's coating capabilities, please contact one of our sales representatives at (518) 371-2684.

PVA also offers the following products to improve your dispensing application:

FC1-C-SP

FC100-C spare parts kit

FCS300-ES

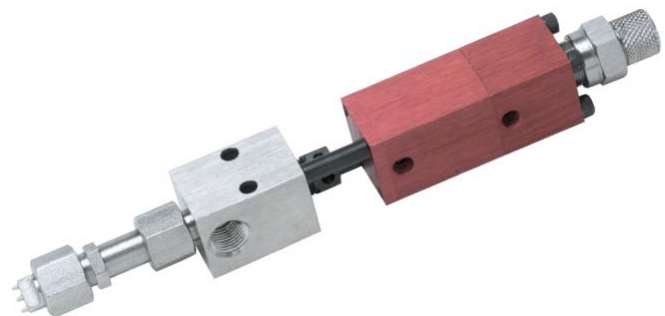
Stainless steel extended spray valve

FCM100

Non-contact micro dispensing valve

FC100-MC

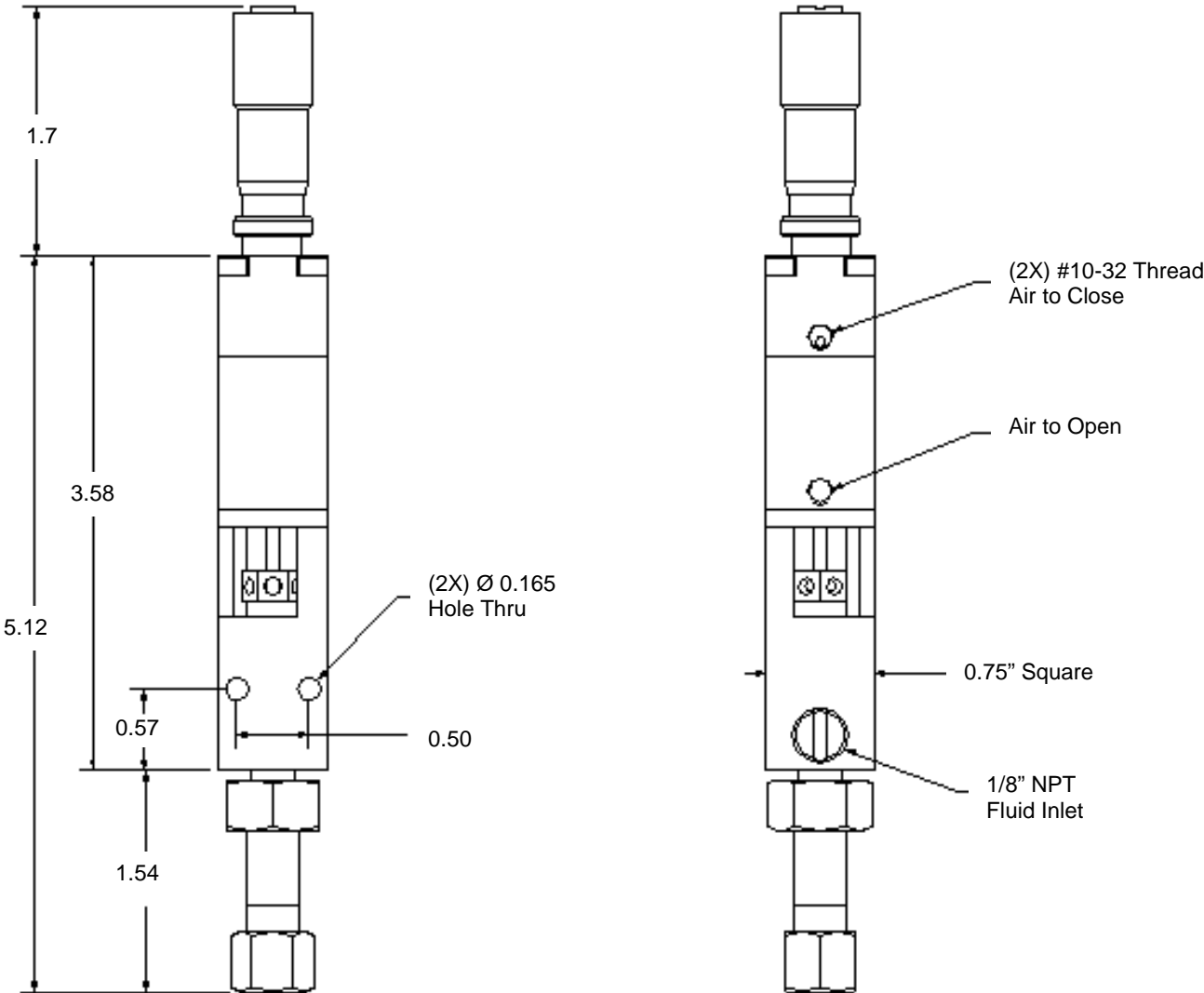
Stainless steel front closing dispensing valve



One Mustang Drive
Cohoes NY 12047
tel 518 371 2684
fx 518 371 2688
www.pva.net

Teflon[®] and Kalrez[®] are registered trademarks of Dupont.

FC100-C Mounting Dimensions



All dimensions provided in inches