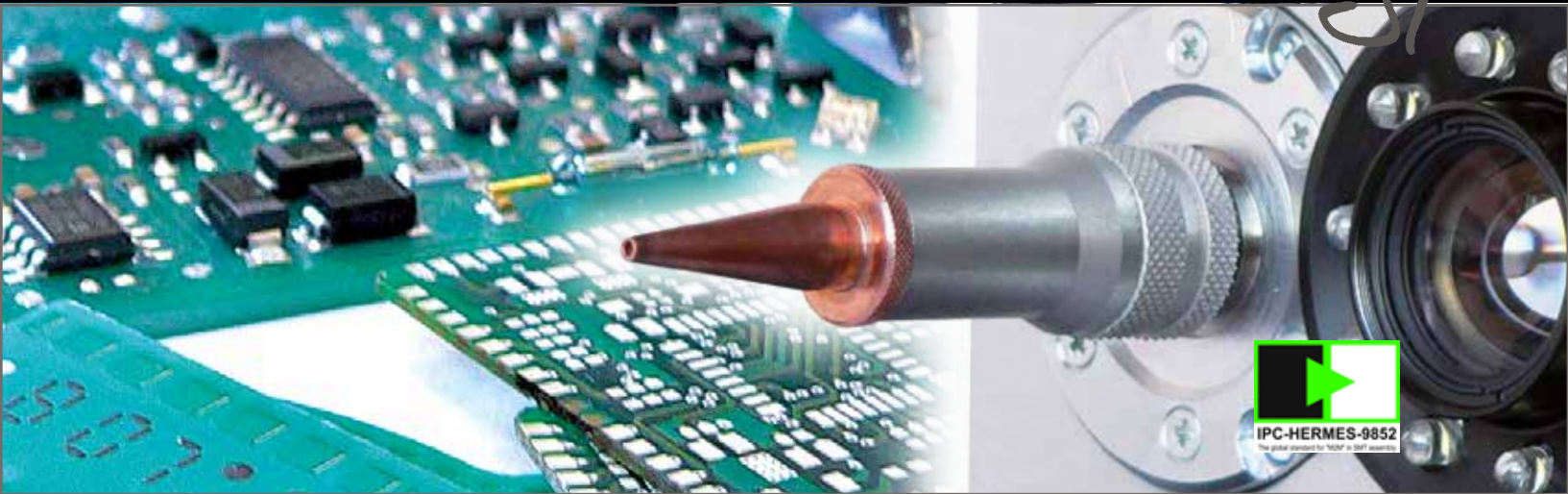


where ideas become technology



Laser Depaneling

NeoCut Plus shape is a Laser depaneling equipment, based on the Osai innovative LASER Cut Technology, capable of performing clean, safe and with zero mechanical stress on the electronic components close to the cutting path.

LASER depanneling is the best way to perform extremely fast depaneling processes (up to 70% saving on cutting time obtained with traditional methods) and flexible cutting (tabs or Vcut depaneling).



NEOCUT Plus



PROBLEM:
SOLUTION:

PARTICULAR PCB SHAPES
SIMPLE CUTTING PLAN



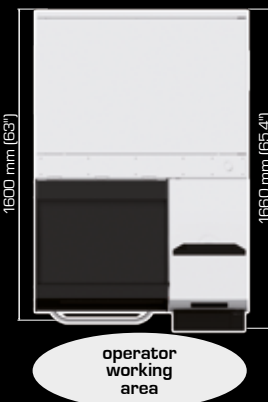
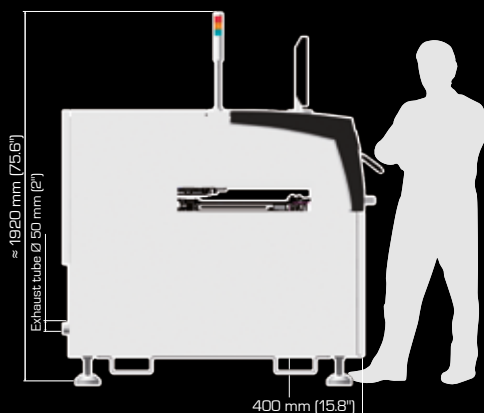
PROBLEM:
SOLUTION:

CONNECTOR UNDER THE PCB JUNCTION
LASER PRE-CUTTING OF THE PCB JUNCTION



V-CUT ABOVE THE FLAT
LASER PRE-CUTTING OF THE V-CUT

 **Osai**
automation systems
www.osai-as.com



MACHINE CONFIGURATION

Transport (Height)	SMEMA compliant
Max. transport width	480 mm [19"] with automatic width adjustment
Interface	SMEMA
Transfer direction	From left to right (optional from right to left or pass-back)
Operating side - Fixed rail	Front of the machine

PANEL DIMENSIONS

Panel (Length - Width)	70 mm to 480 mm [2.8" to 19"] - 50 mm to 480 mm [2" to 19"]
Panel (Weight)	Up to 3 Kg [6.6 lbs]
Transport PCB	3 mm flat belt
Panel thickness	0.5 mm to 3.5 mm [19.7 mils to 138 mils]
Panel clearance	40 mm Up / 40 mm Down
Cutting area (Length - Width)	Up to 400 mm (Up to 16")

INSTALLATION REQUIREMENTS

Power supply	CE 230V	ETL 208/240/277/440/480/575V
Power supply system	CE 1P+N+PE - 50/60 Hz, +/-10%	ETL 2Ph+GND 3 Wire - 50/60 Hz, +/-10%
Power consumption	Typical 1,5 kW at work	
Air pressure	6 bar [87 p.s.i.]	
Average consumption	< 10 NI/min. [2,64 gpm]	
Ambient temperature	22°C +/- 2°C [72°F +/- 4°F]	
Humidity	< 70% [non-condensing]	

MACHINE DESCRIPTION

Length x Width x Height	1100 mm x 1660 mm x 1920 mm [43.5" x 65.4" x 75.6"]
Codes reading	Data Matrix ECC200, Code 39, Code 128, 2/5 Interleaved, QR code
Repeatability	+/- 20 µm [0,78 mils]
Accuracy	+/- 20 µm [0,78 mils]
Axis speed [X - Y]	54 m/min
Weight	Approx. 1100 Kg [2425 lbs]
Color	RAL 9018, RAL 7016
Noise level	< 70 dB

LASER DESCRIPTION

Laser power max	100W
Laser source	CO ₂
Cutting speed	Up to 3 m/min
Cutting kerf	180 µm [7 mils]
Board thickness	Up to 3 mm

STANDARD FEATURES

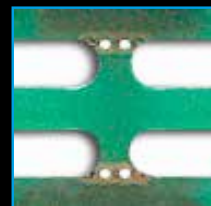
Osai cutting head, Cutting box, Standard camera for programming

UPGRADES AND OPTIONS

- Automatic power meter for "power on workpiece" measurement
- 2D code and fiducial recognition
- DB connection
- Exhauster
- Double belt for inline process



1mm Stamp



2mm Stamp



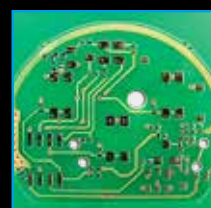
1mm Thin PCB Junction



2-3mm Average PCB Junction



V-Cut



Full Cutting

The specifications given in this document represent the state of engineering at the time of publishing. Osai reserves the right to make modifications on the specifications and materials.