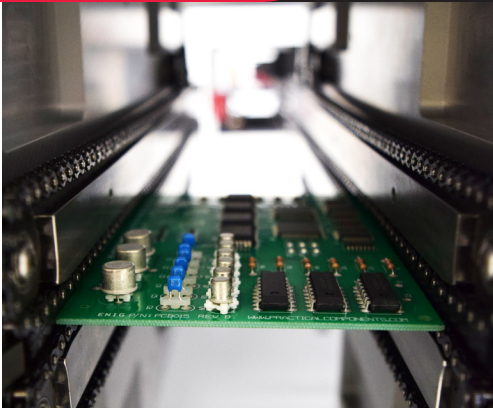




**WHERE
PRECISION
DRIVES
PRODUCTION**



SYSTEM SPECIFICATIONS

Power Requirements:

208, 230, 400, 460 VAC, +/-10%, 50/60 Hz

Maximum Panel Temperature:

260° Celsius (500° Fahrenheit)

Curing Length:

1.2 m / 2.4 m
(4' / 8')

Independent Heating Zones:

Programmable in two foot sections

Conveyor Speed:

0.03 m/min to 15.24 m/min
(0.1 ft/min to 50 ft/min)

Board / Pallet Width:

50 mm to 500 mm
(1.9 in to 19.6 in)

Component Clearance:

100 mm (4 in) top and bottom

Conveyor Height:

890 mm to 965 mm from floor
(35 in to 38 in, SMEMA standard)

Exhaust:

300 cfm exhaust fan with low level alarm included (varies on length)

Certification:

CE

DeltaTherm

Infrared Heat Curing Chamber

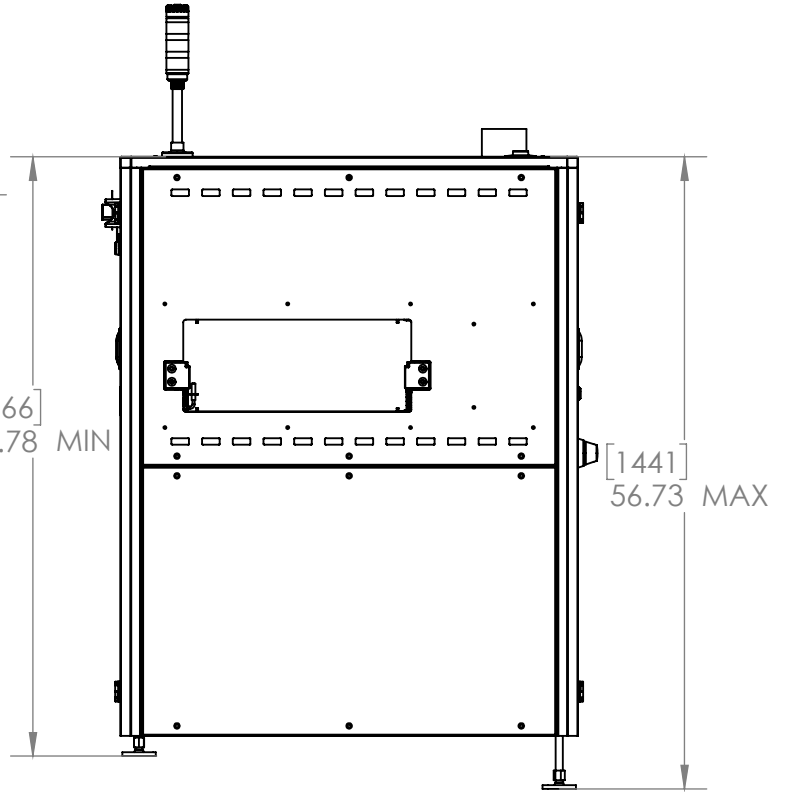
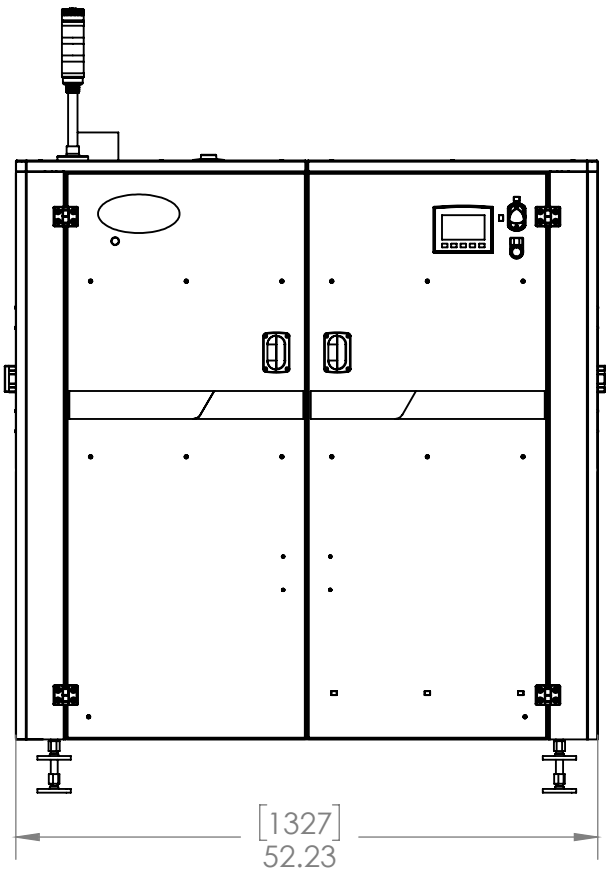
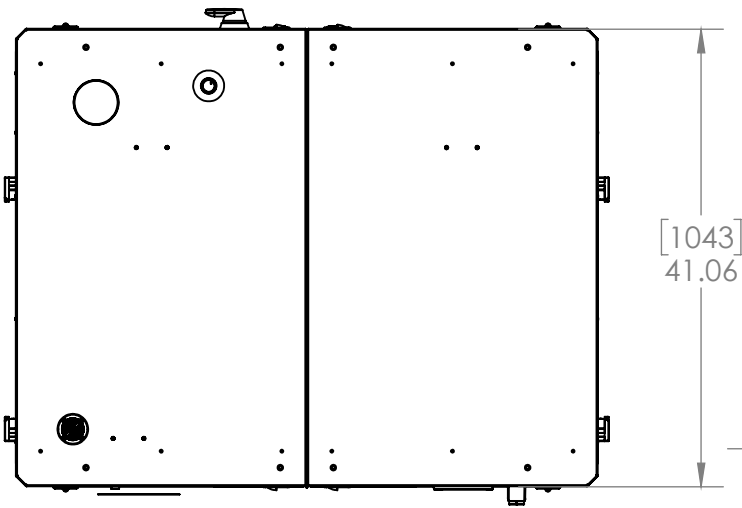
PVA's DeltaTherm utilizes infrared panels to efficiently cure adhesives and coatings in a controlled, heated environment. The DeltaTherm features a double-sided configuration available in 4' and 8' curing lengths. The DeltaTherm offers custom heat profiling in each two foot section. Each infrared, coated panel is constructed for easy cleaning and maintenance.

The DeltaTherm has many integrated features including:

- Edge carrying, variable speed pin chain conveyor
- Rail expansion compensation
- SMEMA communications interface
- Micrologix PLC controller
- OIT Touch panel with display screen
- Four-inch top and bottom side component clearance
- Thermocouple process control with independent over temperature protection

For more information, please contact PVA at info@pva.net or (518) 371-2684.





*Drawing measurements shown in millimeters and inches