

# AUTOTRONIK

Fertigungssysteme für die **Elektronikindustrie**

**AUTOTRONIK-SMT GmbH**  
Sulzbacher Str. 111  
D-92224 Amberg

Tel +49 (0) 9621-600 691  
Fax +49 (0) 9621-600 692

office@autotronik-smt.com  
[www.autotronik-smt.de](http://www.autotronik-smt.de)

## MODEL: BA388P4-V

### SMT-PICK&PLACE MACHINE

- ▶ Perfect for medium & large volume production
- ▶ High Accuracy and high Flexibility from 01005 up to 0.3 mm fine pitch
- ▶ 256 intelligent Auto Tape Feeder
- ▶ Ballscrews in X-Y direction
- ▶ AC Servo Motors X/Y/Z
- ▶ Up to 8.800 CPH
- ▶ COGNEX Alignment System „Vision On the Fly“
- ▶ Bottom Vision Kamera for fine pitch QFP & BGA
- ▶ Automatic Reference Point Recognition
- ▶ Conveyor System
- ▶ Vision Inspection
- ▶ Universal CAD Conversion
- ▶ Barcode Reader for Feeder setup
- ▶ Tracability of production data



Innovative  
Features



Unbeatable  
Service



Worldwide  
for you!



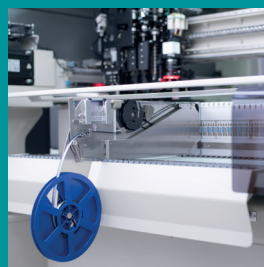
Specialist in small  
and medium-sized  
manufacturing.



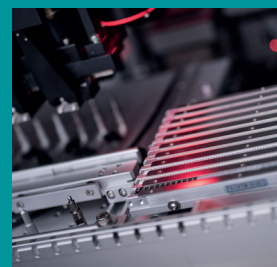
Quality &  
innovation at  
a fair price.



All from  
one hand.



Intelligent feeders in all common sizes. Component spectrum from 01005 to 100x150 mm, component height up to 15mm



Components on tapes, tubes, cut tapes, loose components and trays can be processed.

# MODEL: BA388P4-V

## SMT-PICK&PLACE MACHINE

### SPEZIFICATION:

- Number of Heads (Vision on the Fly): 4
- Placement rate (under optimum condition):  
8800 CPH, 7000 CPH (IPC 9850)
- Feeder capacity (8mm): up to 256 Tape Feeders
- Feeder capacity (8mm) with conveyor: up to 176 Tape Feeders
- IC Tray capacity: up to 6 Waffle Trays
- Component Sense: Vision detection
- Component Size:
  - Handled by head camera:
    - smallest: 0.6 x 0.3 mm
    - largest: 16 x 14 mm
  - Handled by fixed Bottom Vision Camera:
    - smallest: 0.4 x 0.2 mm (option)
    - largest: 150 x 100 mm
- Resolution (AC Servo Motors):
  - X/Y Axis: 0.005 mm
  - Z Axis: 0.01 mm
- Rotation: 0° to 360° (0.09°/step)
- Placement Accuracy: +/- 0.03 mm
- X/Y Repeatability: +/- 0.01 mm
- Placement Area without conveyor:
  - without Waffle Tray: 1050 x 450 mm
- Placement Area with conveyor:
  - without Waffle Tray: 1340 x 400 mm
- Programming:
  - Direct Input
  - Teach-In by Camera
  - CAD Access (option)
  - Barcode Reader (option)
  - Tracability of production data (option)
- Industrial PC with Windows 10
- Power Supply: 230VAC
- Power: 4600W
- Pressure: 75 psi (5.5 bar), max. 200L/min
- Machine Size: 2050 x 1670 x 1480 mm (L x W x H)
- Weight: 1560kg

