



# VP2000 VP7000 vacuum

## Vapor Phase Soldering Systems High-Performance Systems for Large Series

ASSCON vapor phase reflow soldering systems set standards in soldering technology. The VP2000 inline and VP7000 vacuum systems are based on advanced patented high-tech soldering methods, and offer outstanding soldering quality in large series production.

### VP2000 INLINE

The innovative inline soldering system for large series users is based on the highly successful oxygen-free process used in all ASSCON soldering systems, in which oxygen is excluded from the pre-heating and soldering process. Components like QFP, BGA, Flip-Chip and ceramic modules are produced in the highest standard of quality. Production is also supported by dynamic profiling – a process for automatically controlling the optimum soldering profile in series production.

The system is designed for bare-board product processing on large series production lines. Electrically width-adjusted conveying systems and center support permit fast straight-forward adjustment for flexible production. The system is modularly designed, and consists of loading station, soldering and cooling zones.

### VP7000 VACUUM

The system, which has been equipped with the patented Multi Vacuum system, is designed for integration into large series production lines, and aside from the low consumption rates ensured by the process, also impresses with fail-safe operation. Thanks to the benefits of modern ASSCON vapor phase soldering technology with vacuum handling, hitherto unrevellled levels are achieved in soldering quality. Void-free soldering is particularly important in the case of large-area, energy transmitting solder joints.

#### PRODUCT BENEFITS

- perfect solder joints thanks to the use of advanced technology
- reproducible process conditions
- no overheating or destruction of electronic components
- low energy costs thanks to smart energy management
- low overall running costs
- full traceability capability
- product changing without waiting times
- dual lane conveying for particularly high processing rates

**60 %**

less energy  
consumption

**3.5 kWh**

average  
energy  
consumption\*

\* per h/measured on VP2000-100

# VP2000 inline | VP7000 vacuum

## Vapor Phase Soldering Systems for Large Series

RANGE OF APPLICATION

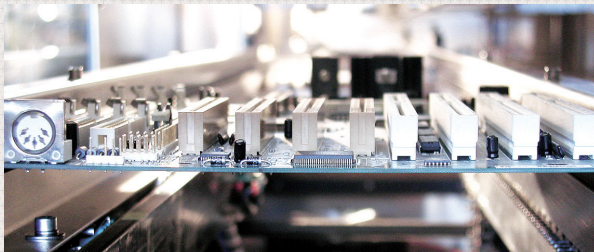
INLINE OPERATION | SERIES PRODUCTION | LARGE SERIES



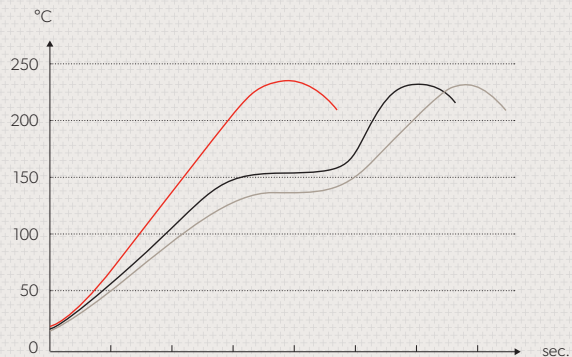
PRODUCT	VP2000 INLINE	VP7000 VACUUM
TECHNICAL DATA		
Max. solder product format	up to 750 x 620 mm	up to 950 x 400 mm
Component height	up to 100 mm	up to 60 mm
Ready for use	after 25 min.	after 40 min.
Operating mode	Inline; single/dual lane	Inline
Vacuum	-	0.5 mbar

### SPECIAL FEATURES

Depending on the version, the VP2000 inline and VP7000 vacuum systems can process products sized from 100 x 60 mm to 750 x 620 mm. They achieve high processing rates in inline mode. The systems can be combined with dynamic profiling, VP7000 vacuum is additionally designed for the Multi Vacuum system.



The systems are equipped with electrically width-adjusted conveying systems and center support.



The VP2000 inline and VP7000 vacuum systems permit infinite adjustment of specified temperature gradients.

[asscon.de](http://asscon.de)

ASSCON Systemtechnik-Elektronik GmbH  
Messerschmittring 35 • 86343 Königsbrunn, Germany  
P +49 8231.95991.0 • F +49 8231.95991.90