



X-4\3010 *Serious.*

New ExtraEye, FAI System with Automatic Inspection Functions.

- Moving camera based on XY axis system.
- X4 Time faster scanning.
- 1100-1800 DPI image resolution, down to 01005 component size.
- 50mm board's height.
- AOI and Batch check options.

Automatic Inspection:

- X-3000 image quality allows for automatic inspection with zero programming.
- Small batched of Arrays:
 - ✓ Automatic compare to Library
 - ✓ Automatic compare to Golden Boards.
 - ✓ 30 seconds to inspect 1500 components.
 - ✓ Reduce inspection by 50%.
- First Article
 - ✓ Automatically compare components of the same part number.
 - ✓ Reduce inspection time by 50%.



Golden Boards:

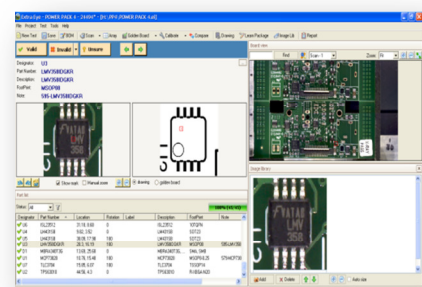
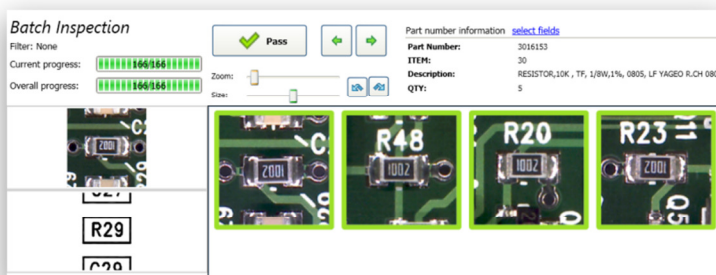
- Zero programming.
- Identify wrong, missing or badly placed components include wrong polarity.
- 20% false call rate.
- Requires package size information.

First Article:

- Zero programming.
- Once a component is verified, Extra Eye automatically inspects remaining components of the same part number,
- Verify Components using batch check in one click.

Automatic Inspection & Camera.

- Camera on XY system
 - ✓ Components always viewed from the top.
 - ✓ Automatic inspection algorithm effectively locates components bodies for comparison.
 - ✓ Work well for small and large components.



ExtraEye – The Best First Article Inspection Solution.

1. Why ExtraEye?

First Article inspection (FAI) now with automatic systems included in the PCB assembly process in one of the most important steps – every mistake from the assembly machine setup multiply into hundreds of incorrectly assembly PCBs if left unchecked . Therefore, it is extremely important to accomplish first article with maximum accuracy.

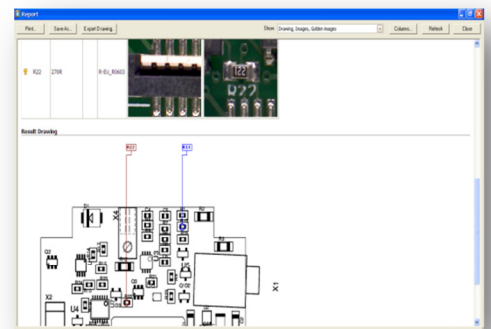
On the other hand, assembly line downtime during the FAI procedure is very expensive. So, you can't waste time programming AOI system, even though you have one. Manually checking FAI by cross reference between BOM and assembly is open to error and very time consuming.



2. What is ExtraEye?

Unlike AOI, The ExtraEye is very quick and easy to use. Importing standard data take around 3-5 minutes.

ExtraEye is a hardware/software system design to assist any level of Operator in the FAI process. The hardware part is a device based on a XY axis system with high quality image, capable to inspect all electronics components from top view down 01005 outlines. By presenting and image of the place component with the related details from the BOM and assembly drawing ExtraEye boosts inspection speed, reduce fatigue of the personal and as result, ensure 100% inspection accuracy.



3. Working in a round 5 minutes with ExtraEye!

Validating a manufactured PCB is easy and straightforward:

- ✓ Load the coordinate file (text format), BOM file (text format) and assembly drawing.
- ✓ Scan a PCB.
- ✓ Let the Program navigate you through all devices. Mark the ones Activate automatic features.
- ✓ Filter and sort the list in the order you required.
- ✓ Each device is blown up in separate window with its corresponding assembly drawing conveniently shown below and all its BOM details above.
- ✓ Print or email a report showing all invalid devices on top of the assembly drawing.

Model X-3010

Max PCB Size : 380mm x 450mm

Max Scan Area : 350mm x 450mm

Max Component Height: 50mm

Model X-4010

Max PCB size: 500mm x 540mm.

Max Components Height: 50mm

ExtraEye is a professional solution to improve the manual inspection process and small batches AOI's for SMT and PTH PCBs!