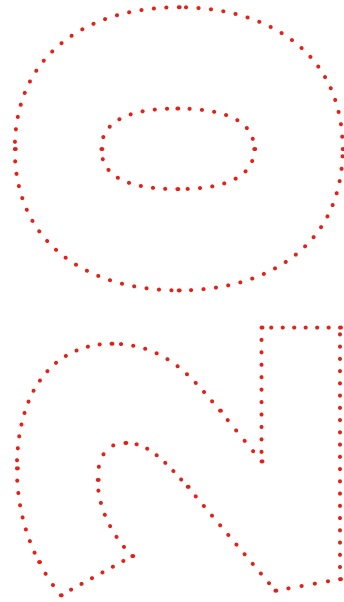


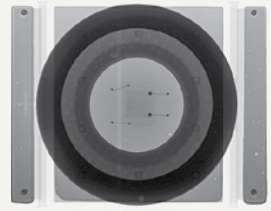
**Our
product
series**

ASSCON
Vapor Phase
Technology

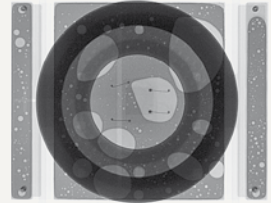


< 1% voids

HIGH-PERFORMANCE LED



With vacuum



Without vacuum

vacuum 1997

ASSCON invented the worldwide first vacuum process in vapor phase soldering together with an electronic manufacturing partner.

Our customers confirm the quality

With the innovative Multi Vacuum process an assembly can be sequentially processed with multiple individually adjustable vacuum treatments. Depending from the requirements of the product, they can be executed before as well as at Liquidus of the solder paste.

Clean Vacuum Technology

With this patented process the vacuum process is performed outside the hot vapor zone. The dry product during vacuum process prevents gas bubbles and micro-explosions as a result of pressure changes. Process-related an immediate cooling of the product still in the vacuum is guaranteed. At the same time an extraction of vapor during the vacuum process is prevented and the consumption of the process fluid is significantly reduced.



Void-free soldering of leadfree assemblies with conventional components within the well-known process limits is only possible with vacuum soldering systems.

Product quality with vacuum

- ✓ Multi Vacuum
- ✓ Clean Vacuum Technology
- ✓ Permanent Filtration System



VP800 vacuum

- External technique module
- Automatic soldering process
- Average power consumption: 2.2 kWh

PCB FORMAT (MAX.)

480 x 295 mm

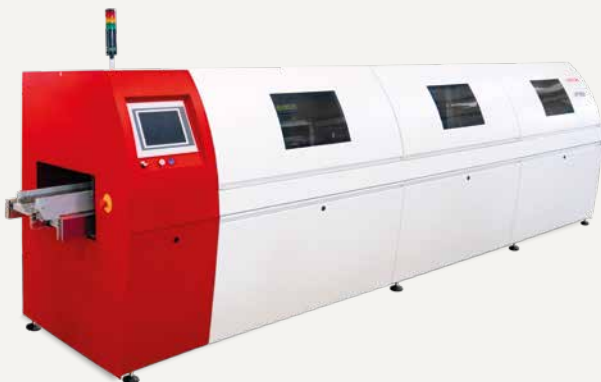


VP6000 vacuum

- Particularly suited also for multiple-shift operation
- Ideal for 3D-MID, Hybrid- and Power Module Production
- Average power consumption: 4 kWh

PCB FORMAT (MAX.)

600 x 600 mm



VP7000 vacuum

- Pin and chain transportation system
- Ideal for 3D-MID, Hybrid- and Power Module Production
- Average power consumption: 5.5 kWh

PCB FORMAT

520 x 450 mm

DUAL LANE TRANSPORT

620 x 430 mm

620 x 2 x 250 mm

Worldwide leading

in Vapor Phase Technology

VP310 VP510

- ✓ flexible to use
- ✓ easy to use



VP800 VP800 vacuum

- ✓ multipurpose operation
- ✓ compact design
- ✓ vacuum capable



LABORATORY AND SMALL PRODUCTION

- Ready for operation within few minutes
- Independent from any setup requirements due to 240V connection
- Can be used at any location
- Easy, self-explaining operation
- Closed process chamber

VP 310

300 x 300

VP 510

450 x 450

SMALL- AND MEDIUM SIZES SERIES

- Sensor based process control
- Multi chamber system
- Small footprint
- place in through standard door size 800 mm

VP 800

610 x 460

VP 800 VACUUM

480 x 295

COOLING-WATER COOLING SYSTEM WITH ELECTRIC CHILLER

PERMANENT FILTRATION SYSTEM FOR PROCESS FLUID

CLEAN VACUUM TECHNOLOGY

MULTI VACUUM

VP1000 VP6000 vacuum

- ✓ stand alone
- ✓ ideal also for multiple-shift operation
- ✓ vacuum capable



VP2000 VP7000 vacuum

- ✓ inline (work piece carrier-free)
- ✓ high throughput
- ✓ shortest product changeover
- ✓ vacuum capable



SERIES PRODUCTION

- Due to work piece carrier, flexible and efficient applicable
- Particularly suited for frequent product and soldering program changeover
- Ideal for EMS and 24/7 operation

PCB FORMAT UP TO

610 x 610

VACUUM

600 x 600

INLINE SERIES PRODUCTION

- Real inline system with pin and chain transport
- Automatic width adjustment and center support
- Process-related fast product changeover without waiting time
- Ideal for EMS and multiple-shift operation
- Dual lane transport for maximum throughput

PCB FORMAT

620 x 620

DUAL LANE TRANSPORT

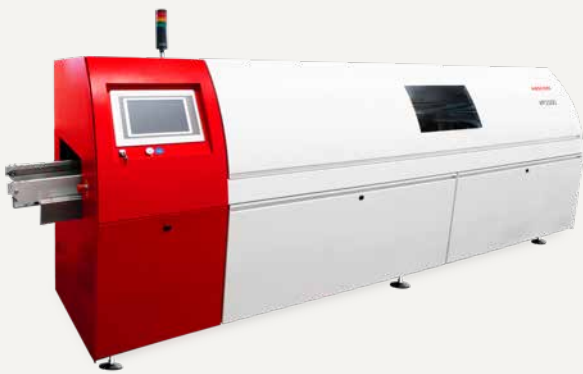
620 x 2 x 275

DYNAMIC PROFILING

DYNAMIC PROFILING PLUS +

Lean Production with Vapor Phase Inline

- ✓ Pin and chain transport
 - ✓ Dynamic Profiling
 - ✓ Permanent Filtration System
-



VP2000

- Pin and chain transportation system
- Also available as high-performance dual-lane soldering system as well as for heavy weight soldering products (up to 20 kg)
- Connected load starting at 7 kW

PCB FORMAT

VP2000-100

600 x 520 mm

750 x 520 mm

VP2000-210

600 x 520 mm

VP2000-310

620 x 620 mm

VP2000-410

620 x 465 mm

620 x 2 x 275 mm



VP7000 vacuum

- Pin and chain transportation system
- Multi Vacuum; final vacuum up to 0.5 mbar (vacuum pump)
- Ideal for 3D-MID, Hybrid- and Power Module Production
- Connected load starting from 20kW

PCB FORMAT

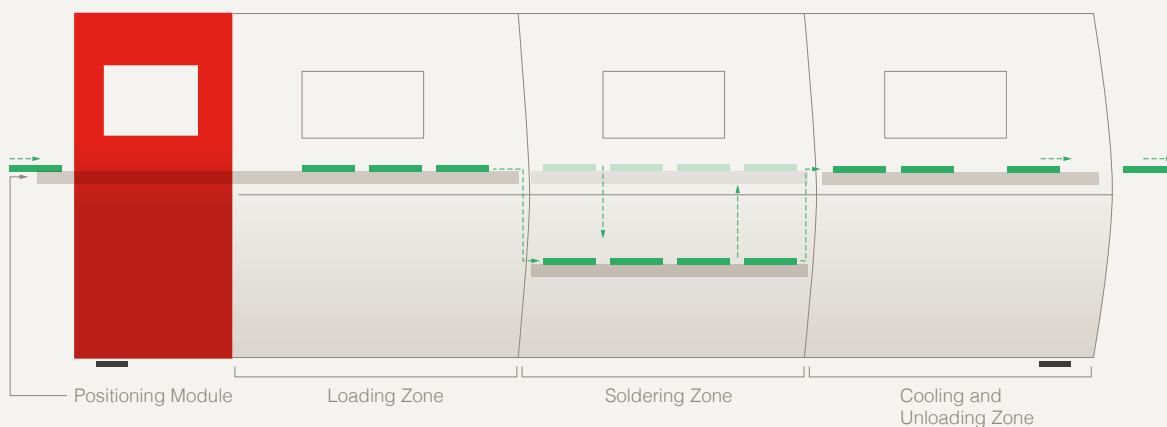
VP7000-200

520 x 450 mm/1000 x 450 mm

VP7000-400

620 x 450 mm

< 5 min. product changeover



High throughput

Since 1999 customers count on ASSCON vapor phase soldering systems with pin and chain transport as real inline solution for their electronic production.

Permanent filtration system (PFS) – pump-less filtration system for continuous filtration of the process medium (Galder) during the system operation. The soiling of the system is significantly reduced and the maintenance cycles get extended.

Dynamic Profiling measures and controls every temperature profile realtime on product level.

Dynamic Profiling PLUS+ allows a fully automated adjustment of soldering programs. Beyond the presetting of profile parameters any further action of the operator for adjusting the soldering program is completely superfluous.

starting at

7 kW

connected load

inline

Vapor Phase. Vacuum. Inline.

Soldering – the simple way!