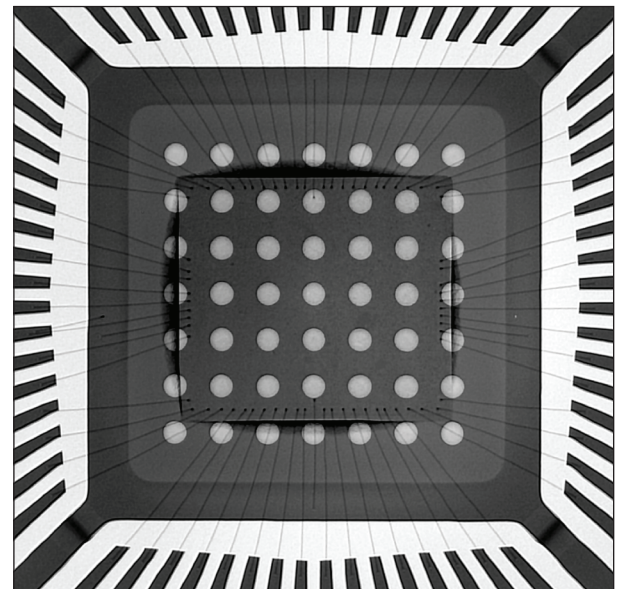


Market-Changing Cost Effective Production Platform

Advantages

- Nordson DAGE Open, Transmissive X-ray Tube
- < 0.95 μm Feature Recognition Tube
- 160 kV Tube with Full 3W of Target Power at Sub-Micron Feature Recognition
- Nordson DAGE 1.33 Mpixel @ 10fps Long Lifetime CMOS Flat Panel Detector with Real Time Image Enhancements
- Geometric Magnification 1,400 X, System 4,200 X
- 29" x 22.8" (736 x 580 mm) Maximum Board Size
- Up to 65° Oblique Views without Loss of Magnification
- 23" TFT LCD Monitor
- No Programming Skills Required for Automated Inspection Tasks
- High Quality Real Time Imaging
- μCT Option



25 μm diameter copper wire device

Nordson DAGE, the only x-ray company whose focus is on x-ray electronics inspection, offers the Nordson DAGE XD7500VR Jade FP x-ray inspection system that uses the latest technology flat panel detector to provide the market-leading, cost effective approach where high quality real time imaging is needed for production tasks. With a great specification, this foundation platform easily outperforms the competition.

The Nordson DAGE open, transmissive x-ray tube, with its long lifetime filament technology, together with the high quality 1.33 Mpixel CMOS flat panel detector makes this jewel

of a system provide the most cost effective choice in terms of price and performance for the high magnification and high resolution real-time imaging necessary for electronics inspection. The vertical system configuration, with the x-ray tube sitting below the isocentric 'move and tilt' of the detector, all controlled through the simple, joystick-free, 'point and click' software. This provides the safe and collision-free inspection for production applications. All these tasks can be simply and quickly automated without the need for programming skills.

Crystal Clear X-ray Inspection. Nordson DAGE.

XD7500VR Jade FP X-ray Inspection System

Specifications

- Nordson DAGE VR950 new technology, open, transmissive x-ray tube:
 - < 0.95 µm feature recognition at all kVs
 - up to 160 kV at 3 W target power
 - long life filament assembly
 - automated tube stabilisation
- 1,400 X geometric magnification (4,200 X system magnification)
- Easy, collision-free, high magnification and high resolution inspection:
 - even at oblique angle views
 - joystick-free 'point and click' operation
- Maximum board size: 29" x 22.8" (736 x 580 mm) with reduced magnification
- Maximum inspection area: 20" x 17.5" (508 x 444 mm)
- Up to 65° oblique angle views
 - for 360° around a point of interest
 - isocentric manipulator configuration keeps features in field of view
- Long lifetime CMOS digital detector with 1536 x 864 pixels (1.33 Mpixels):
 - 10 fps full-frame 'real time' image acquisition
 - real time image enhancements
- 16-bit digital image processing
- Anti-vibration control
- 23" TFT LCD operator display monitor
- Nordson DAGE Image Wizard operating software including:
 - automated and manual component fault analysis including BGA & QFN
 - simple to create and use robust automated inspection routines
 - plated through hole (PTH) fill percentage calculation
 - accurate measurement functions
 - Automated and manual die attach / area void calculation
 - Patented¹ x-ray navigation map for easy fault location
 - Simple to use, no complicated joysticks required
- Fully lead-shielded system safety cabinet
 - providing < 1 µSv/hr x-ray leakage
 - meets all international standards
- Windows 7 64-bit operating system
- 1 year system warranty

Options

- Joystick control (X,Y or X,Y & Z)
- Barcode reader
- 2nd Year System Warranty
- µCT option with system order or as a retro-fit

System

- Size: 57" x 67" x 77.5" (w x d x h)
- Size: 1450 x 1700 x 1970 mm (w x d x h)
- System Weight: 1950 kg (4300 lbs)
- Maximum Sample Weight: 5 kg
- Power: Single Phase 200 - 230Vac, 16A
- Max. Power Consumption: 1000 W Max.
- Operating Temp. Range: 10 - 30°C
- Humidity: < 85% (non-condensing)

For more information, please contact your Nordson DAGE regional office or speak with your local Nordson DAGE representative, all of whom are listed on www.nordsondage.com

Americas

+1 510 683 3930 **Phone**
sales@nordsondage.com **Email**

China

+86 512 6665 2008 **Phone**
sales.ch@nordsondage.com **Email**

Germany

+49 7021 950690 **Phone**
sales.de@nordsondage.com **Email**

Japan

+81 432 995851 **Phone**
sales.jp@nordsondage.com **Email**

South East Asia

+65 679 69500 **Phone**
sales.sg@nordsondage.com **Email**

United Kingdom

+44 1296 317800 **Phone**
globalsales@nordsondage.com **Email**

